

166

SERIES



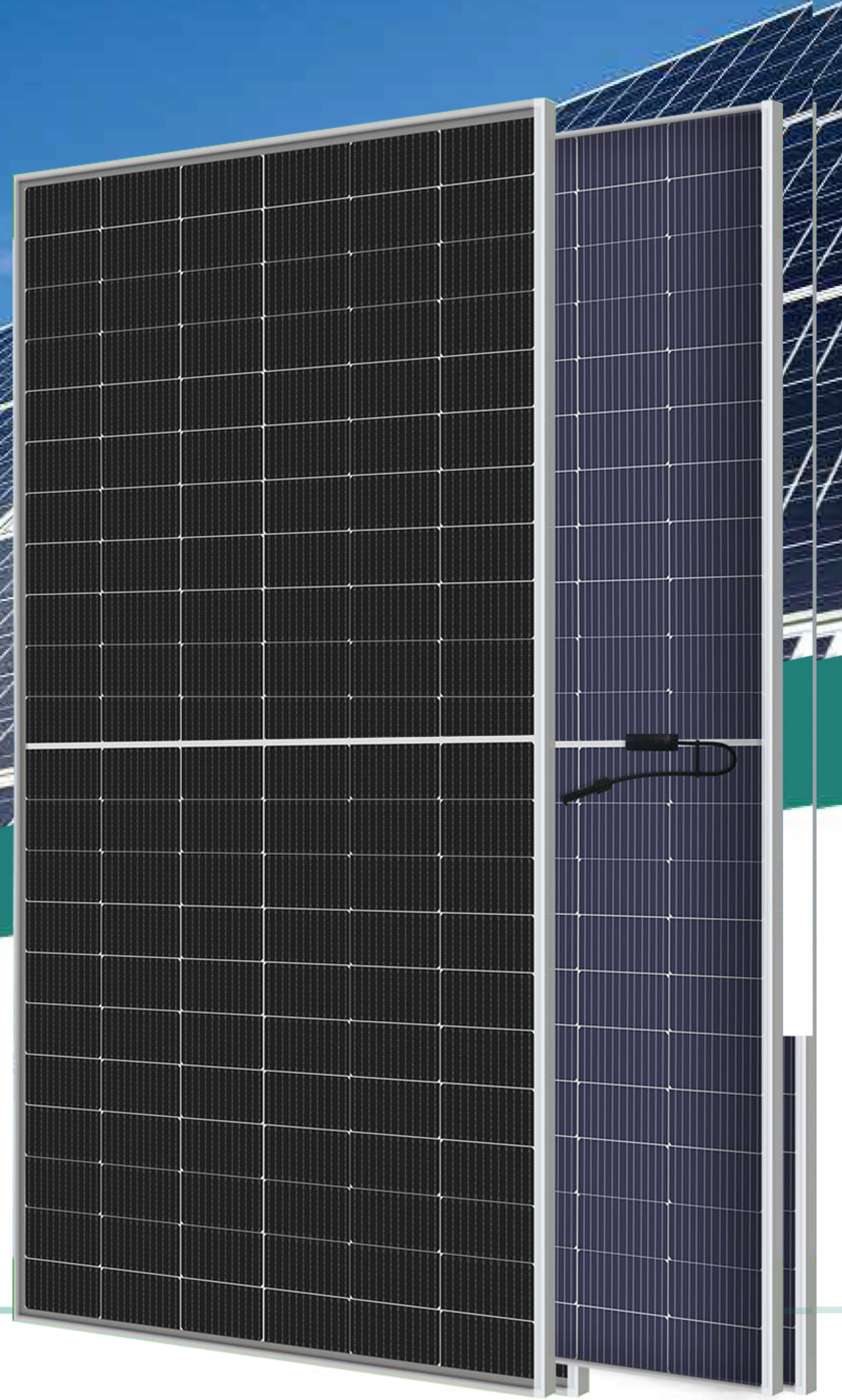
WE440W-460W166M-120S

12 GRID SINGLE CRYSTAL HALF DOUBLE GLASS ASSEMBLY

SINGLE GLASS

166 SERIES S

The 166mm cell is integrated through multi main grid and half chip technology, and the super long redefines the high-efficiency module. 166 half chip module combines innovative technology to effectively improve the efficiency and output power of the module.



PRODUCT CHARACTERISTICS



Multi Busbar Technology
Better light trapping and current collection to improve module power output and reliability.



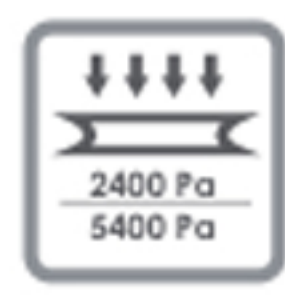
Reduced Hot Spot Loss
Optimized electrical design and lower operating current for reduced hot spot loss and better temperature coefficient.



PID Resistance
Excellent Anti-PID performance guarantee via optimized mass-production process and materials control.



Durability Against Extreme Environmental Conditions
High salt mist and ammonia resistance.

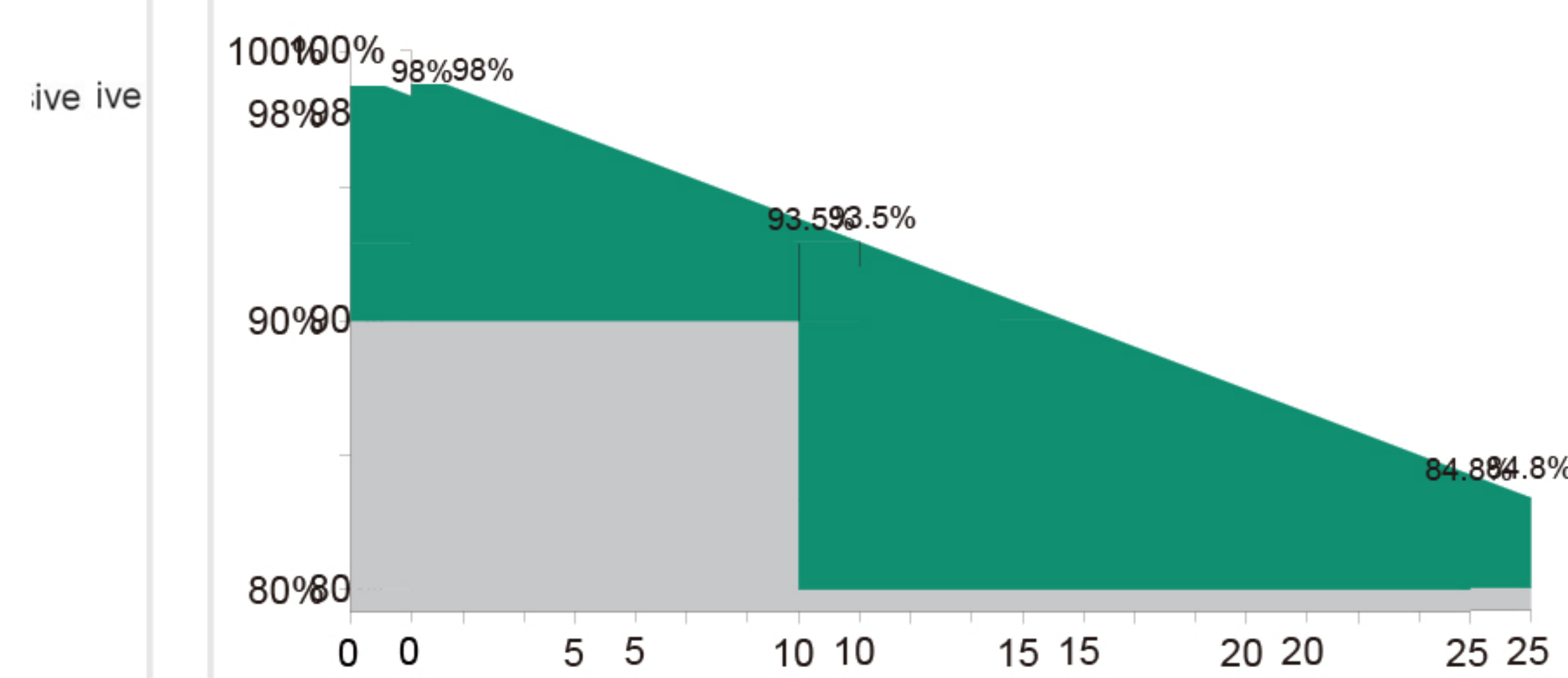


Enhanced Mechanical Load
Certified to withstand: wind load (2400 Pascal) and snow load (5400 Pascal).



PRODUCT GUARANTEE :

12 Year product quality and process assurance
25 Year linear power



PRODUCT AND SYSTEM CERTIFICATION

- IEC 61215/IEC 61730
- ISO 9001/ISO 14001
- UL 1709/UL 1741



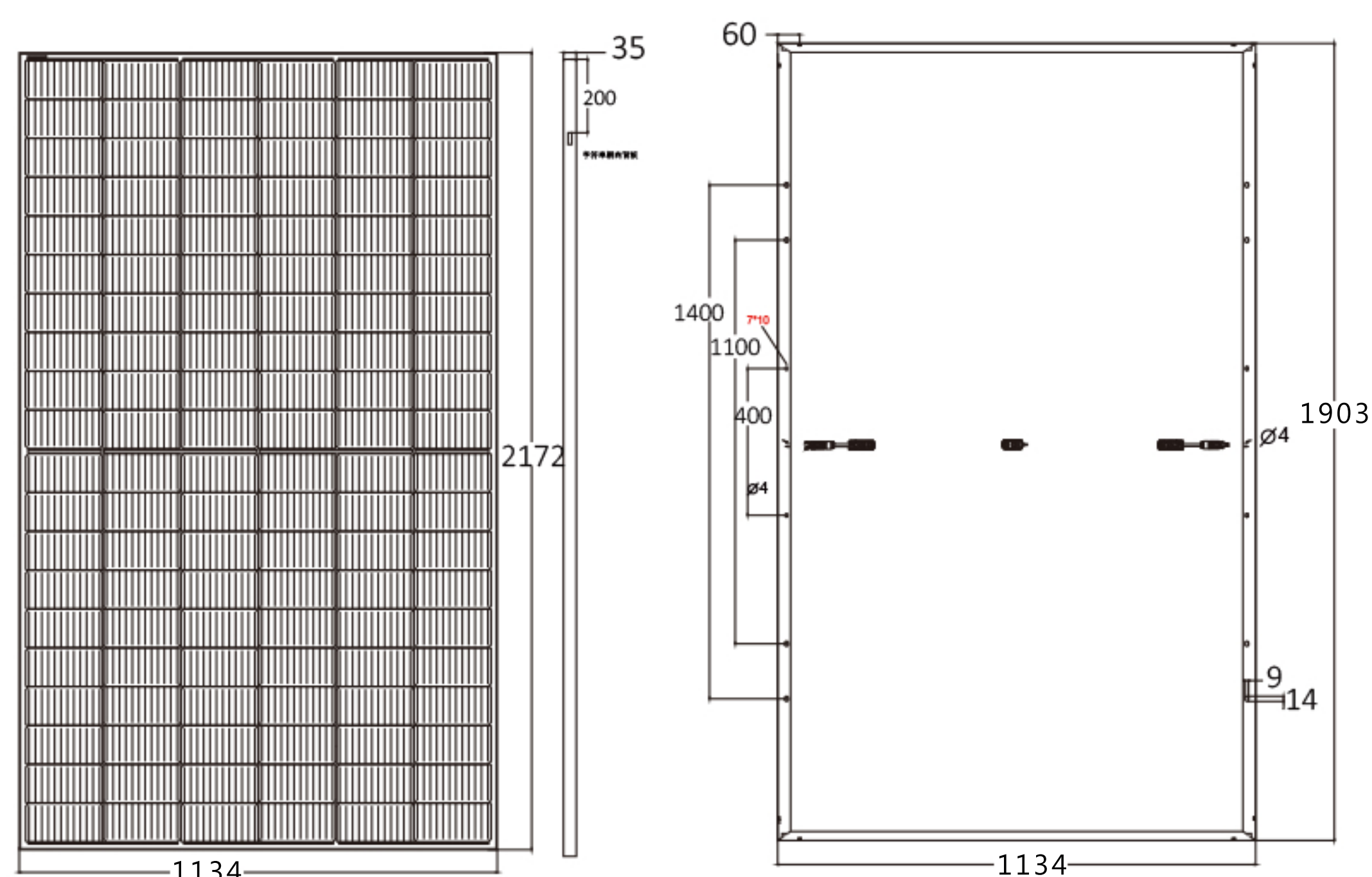
UAE, DUBAI WHITE EAGLES GEN TRD L.L.C

TEL: +971-42211451 +971-508893449



WE440W-460W166M-120S

ENGINEERING DRAWINGS.



ELECTRICAL PARAMETERS @ STC

Parameter	440	445	450	455	460
Max. Power Output Pmax (W)	440	445	450	455	460
Power Tolerance	0~+3%	0~+3%	0~+3%	0~+3%	0~+3%
Max. Power Voltage Vmp (V)	33.72V	33.82V	33.91V	34.06V	34.20V
Max. Power Current Imp (A)	13.05A	13.16A	13.27A	13.36A	13.45A
Open Circuit Voltage Voc (V)	41.02V	41.10V	41.18V	41.33V	41.48V
Short Circuit Current Isc (A)	13.73A	13.79A	13.85A	13.93A	14.01A
Module Efficiency (%)	20.39%	20.62%	20.85%	20.32%	21.32%

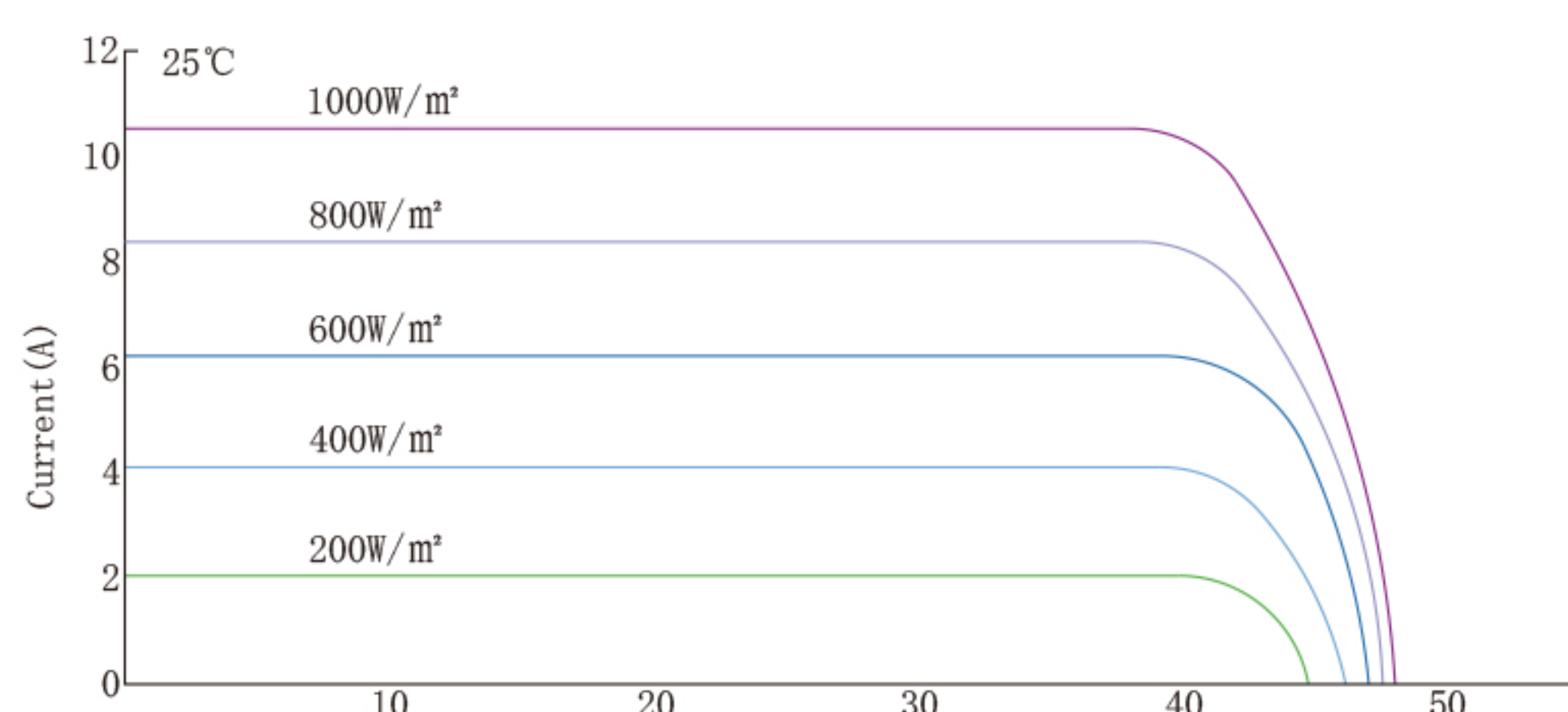
STC (Standard Test Condition): Irradiance 1000W/m², Cell Temperature 25°C, Air Mass 1.5

ELECTRICAL PARAMETERS @ NMOT

Parameter	327	331	335	339	342
Max. Power Output Pmax (W)	327	331	335	339	342
Max. Power Voltage Vmp (V)	31.39V	31.56V	31.73V	31.91V	32.07V
Max. Power Current Imp (A)	10.43A	10.49A	10.55A	10.61A	10.67A
Open Circuit Voltage Voc (V)	38.72V	38.79V	38.87V	39.01V	39.15V
Short Circuit Current Isc (A)	11.09A	11.14A	11.19A	11.25A	11.32A

Nominal Module Operating Temperature (NMOT), Irradiance of 800W/m², Spectrum AM 1.5, Ambient Temperature 20°C, Wind Speed 1m/s

CHARACTERISTIC CURVE



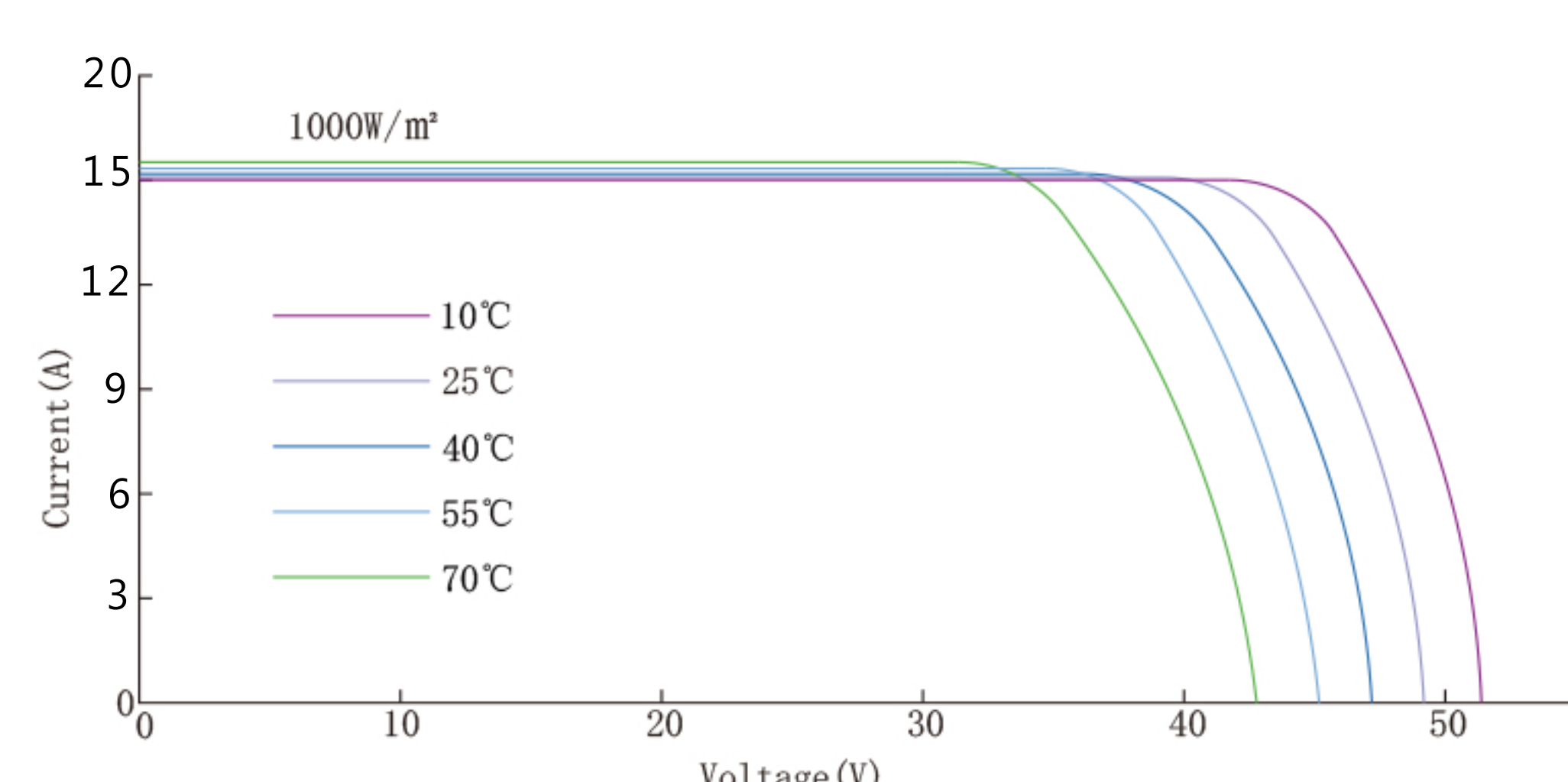
TEMPERATURE COEFFICIENT

Temperature Coefficients of Pmp	-0.34%/°C
Temperature Coefficients of Voc	-0.25%/°C
Temperature Coefficients of Isc	+0.048%/°C

MECHANICAL PARAMETERS

Battery type	Mono
Number of batteries	120 pcs
Dimensions (L*W*H)	1903×1134×30mm
Weight	24.2 kg
Frame	Anodized Aluminum
Junction Box	IP68, 3 bypass diodes
Cable, Length	4mm ² , 300mm

CHARACTERISTIC CURVE



OPERATING CONDITIONS

Maximum System Voltage (V)	1500 (DC)
Operating Temperature (°C)	-40~+85
Max. Wind Load / Snow Load (pa)	2400/5400
Max. Over Current (A)	30
Application Class	Class A
Fire Rating	Class C
NMOT (°C)	44±2

PACKAGING INFORMATION

Per Pallet	36 pcs
40' HQ	864 pcs

Power test error ± 3%

Product specifications are changed without notice

UAE, DUBAI WHITE EAGLES GEN TRD L.L.C

TEL: +971-42211451 +971-508893449